

## Zfx Evolution

### Free yourself from the restrictions of closed systems

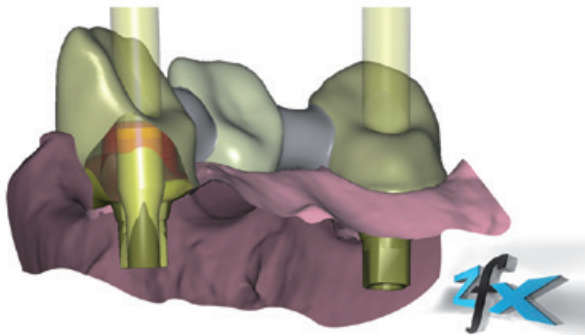
The selection of scanners and software packages for the digital production of high-quality restorations is vast. Heimerle + Meule offers a holistically optimised and perfectly matched process chain – from scanner technology and future-oriented software systems to efficient and high-precision 5-axis machining.



Thanks to the cooperation with Zfx, a unique knowledge and competence platform has been created for all indications and all materials, from inlays to abutments and cobalt-chromium to zirconium.

Zfx Evolution is a latest generation high-quality high-end 3D scanner, designed specifically for the dental industry. Articulated models are measured quickly and easily and can be immediately integrated into the virtual articulator. Thanks to the simple and user-friendly operation, this system also gives newcomers the possibility of benefiting from the digital world of dental technology. Simply and without any restrictions – an open system for all common materials and indications.

The development of the modelling software began more than 10 years ago in dental master laboratories in collaboration with programmers from various German institutions. The programmes were written for use in the dental laboratory, so that an industry-independent software was created, which itself continues to develop with constantly new requirements. All technologies have been tested in practice according to strict selection and examination criteria. This is technology at the highest level!



### Basic package

The high-tech double that consists of the Zfx Evolution and Zfx CAD software provides excellent performance in the acquisition and processing of digital dental data. A compact, precise and versatile package of the latest generation, the investment of which pays for itself within only a year if used for two units per day.

BASIC PACKAGE	7756 3 013	19,950.00 €
3D scanner Zfx Evolution		
Zfx-CAD software/open system		
PC unit with 22" TFT display		
One day CAD/CAM training session		



### Performance characteristics of Zfx Evolution

- Scan for opposing dentition, squeeze bite, crowns and inlays
- Jaw-related scanning
- Easy-to-use application software
- Free data interface, output data in STL format
- 25% time savings compared with other systems
- Highest precision for directly screwed implant designs.  
No shipping of models required. Accuracy under 9 µm in the volume body (measurement according to VDI test procedure)!
- 2-camera technology
- Surface-detection on the model (photometry)
- Bar code system
- Dimensions (W x H x D) 320 x 440 x 480 mm
- 2 year warranty
- CE, UL certification

### Features of CAD software

- Simple operation through menu assistant
- Construction of individual crowns and bridges of all spans possible
- Additional features for creating technical CAD designs, such as inlays, attachments, telescopic crowns, veneers, press technique
- 5-axis milling strategies and templates for different materials and indications implemented in software

### Additional modules

- Virtual articulator
- Abutment designer
- Bar designer
- Splint designer

Detailed product information available upon request.